



**Circular  
Bio-based  
Europe**  
Joint Undertaking

# Call for proposals 2024

Dieter BRIGITTA

Call Coordinator

24 May 2024



# Table of contents

- **CBE JU - introduction**
- **CBE JU Call 2024**
  - Call 2024 topic overview & structure
  - *Scope & overview of the call 2024 topics (Samuele)*
- **Proposal submission, evaluation & networking**
  - Timing
  - CBE specifics & terminology (incl. IKOP & IKAA)
  - Networking opportunities
- **How to prepare an excellent proposal**
  - Legal & financial aspects
  - Lessons learnt from past calls
- ***BIC role in CBE JU, networking & matchmaking (Samuele)***
- **Q&A**

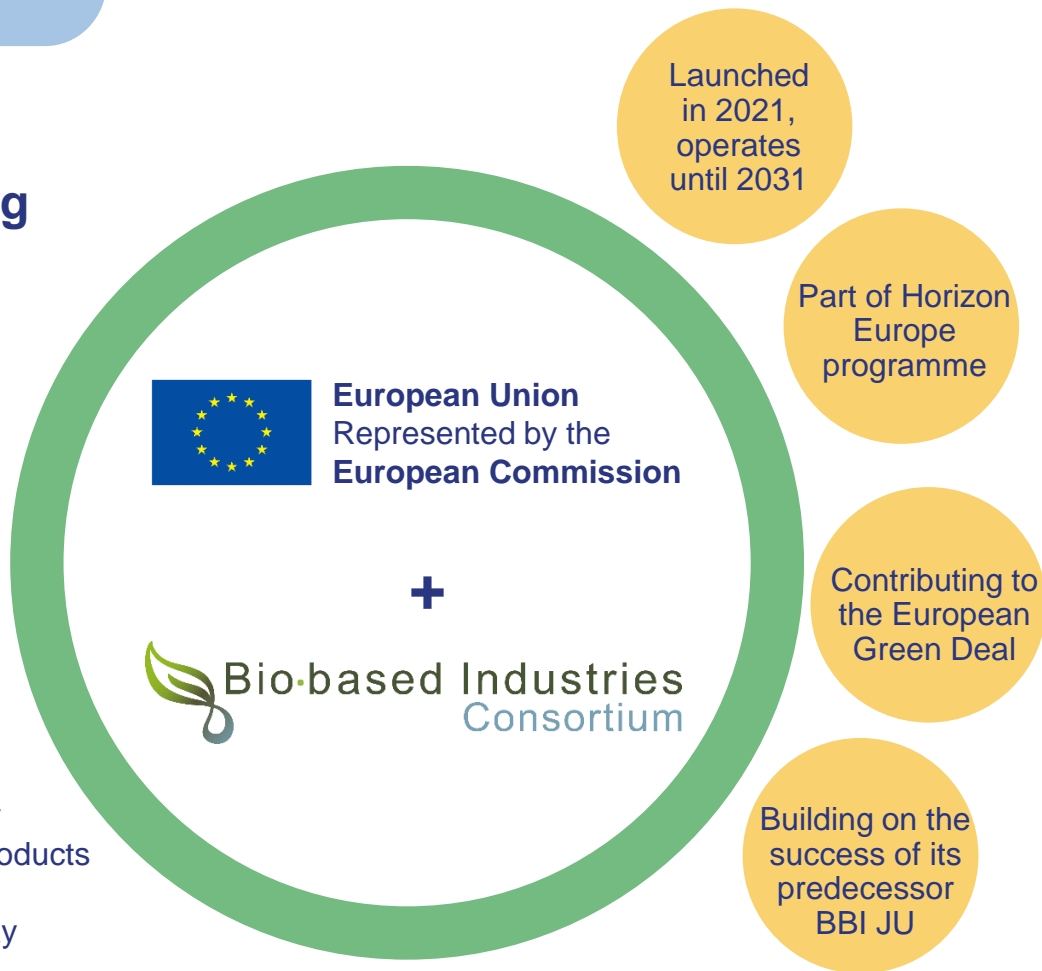
# Table of contents

- **CBE JU - introduction**
- **CBE JU Call 2024**
  - Call 2024 topic overview & structure
  - *Scope & overview of the call 2024 topics (Samuele)*
- **Proposal submission, evaluation & networking**
  - Timing
  - CBE specifics & terminology (incl. IKOP & IKAA)
  - Networking opportunities
- **How to prepare an excellent proposal**
  - Legal & financial aspects
  - Lessons learnt from past calls
- ***BIC role in CBE JU, networking & matchmaking (Samuele)***
- **Q&A**

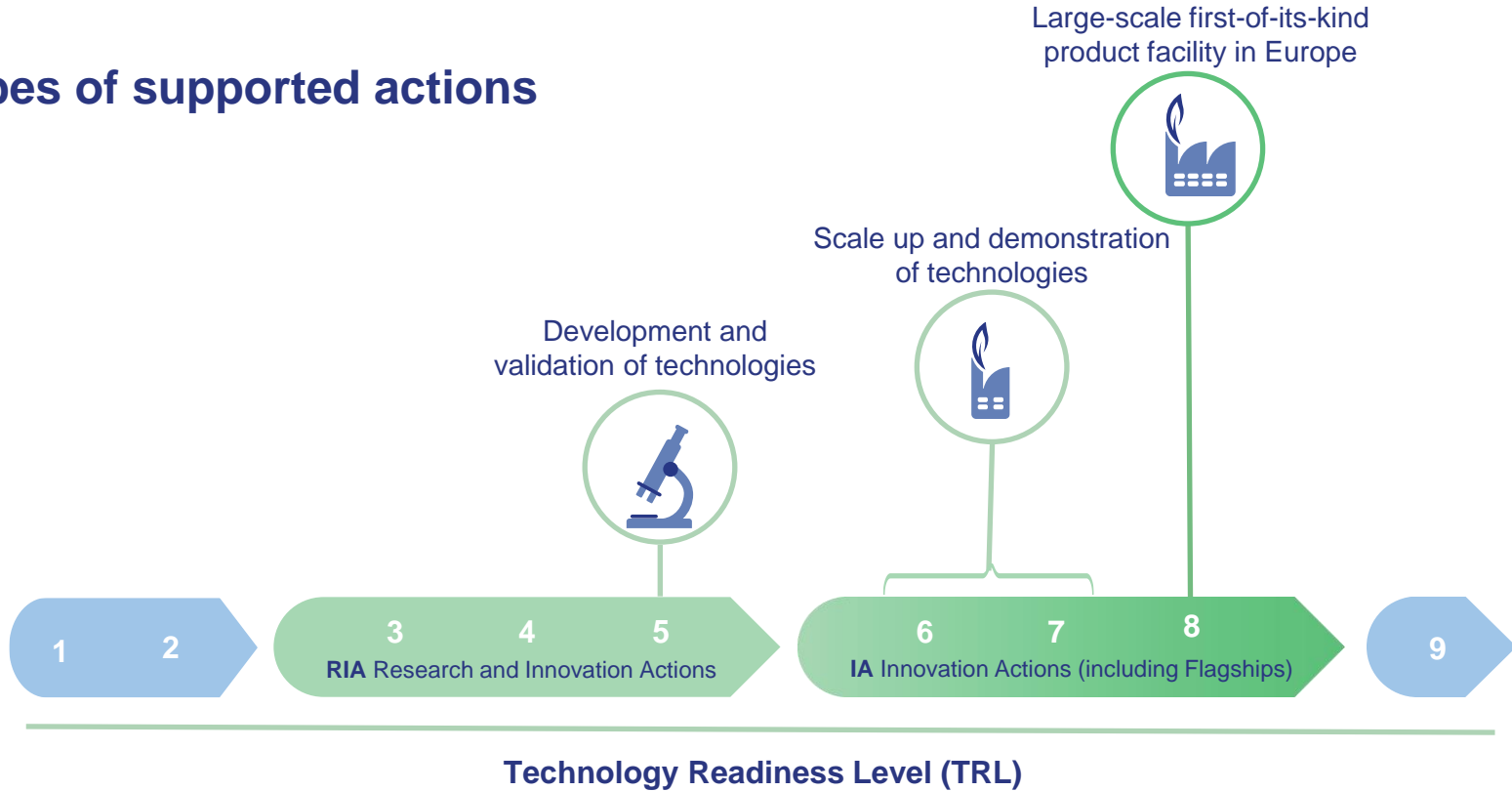
# Circular Bio-based Europe Joint Undertaking

€2 billion public-private initiative

CBE JU is funding projects that deliver bio-based solutions – materials and products made from waste and biomass – in an innovative, sustainable and circular way



## Types of supported actions



**CSA:** Coordination and Support Actions (no link with TRLs)

## CBE JU portfolio – building on BBI JU:

2014-2022



163 projects



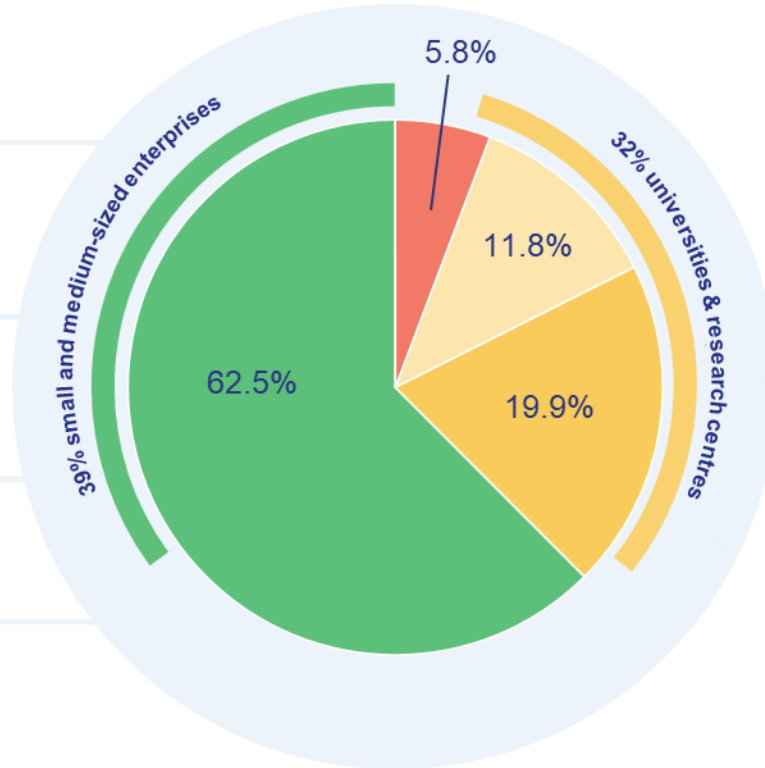
1,198 beneficiaries



€937 million CBE JU funding



39 countries

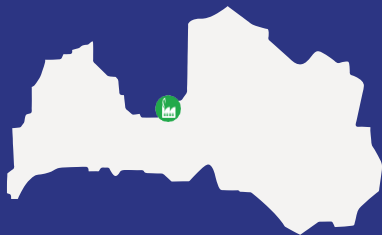


CBE JU funding per type of beneficiary (unique)

- Private companies
- Research organizations
- Higher education establishments
- Other

Data: CORDA, May 2023

# Latvia



 First-of-its-kind industrial biorefinery

## Opportunities for the bioeconomy

Socio-economic benefits

INNOVATION

INCOME DIVERSIFICATION

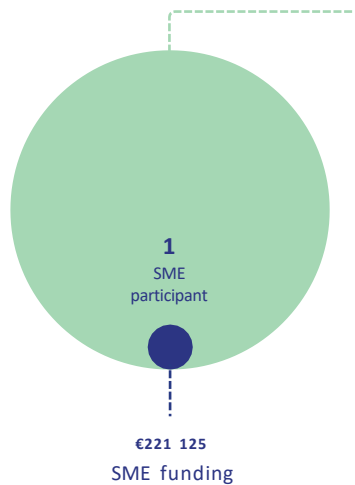
Main resources in CBE JU projects



AGRO RESIDUES



FORESTRY RESIDUES



### VIOBOND

#### Biorefinery location

Riga

#### Company

Latvijas Finieris

#### Resource

Wood residues (lignin)

#### Products

Bio-based resins.

#### Benefit

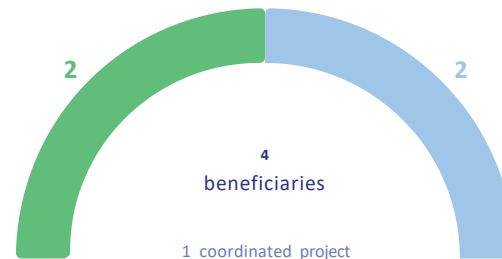
This industrial biorefinery showcases the feasibility and market potential of bio-based resins for eco-friendly wood panels and construction materials. The project could be replicated across Europe, highlighting Latvia's leadership in promoting greener construction materials.

€9 million  
CBE JU funding in Latvia



€8M

€1M



 Private companies  
 Universities & research centres



Check all the projects in the country

# Table of contents

- **CBE JU - introduction**
- **CBE JU Call 2024**
  - Call 2024 topic overview & structure
  - *Scope & overview of the call 2024 topics (Samuele)*
- **Proposal submission, evaluation & networking**
  - Timing
  - CBE specifics & terminology (incl. IKOP & IKAA)
  - Networking opportunities
- **How to prepare an excellent proposal**
  - Legal & financial aspects
  - Lessons learnt from past calls
- ***BIC role in CBE JU, networking & matchmaking (Samuele)***
- **Q&A**



# Table of contents

- CBE JU - introduction
- **CBE JU Call 2024**
  - Call 2024 topic overview & structure
  - *Scope & overview of the call 2024 topics (Samuele)*
- **Proposal submission, evaluation & networking**
  - Timing
  - CBE specifics & terminology (incl. IKOP & IKAA)
  - Networking opportunities
- **How to prepare an excellent proposal**
  - Legal & financial aspects
  - Lessons learnt from past calls
- *BIC role in CBE JU, networking & matchmaking (Samuele)*
- Q&A

# 18 topics and their budget

Type of action	Topics HORIZON-JU-CBE-2024		Million EUR
IA- Flagship	IAFlag-01	Bio-based value chains for valorisation of sustainable oil crops	20
	IAFlag-02	Bio-based dedicated platform chemicals via cost-effective, sustainable and resource-efficient conversion of biomass	20
	IAFlag-03	Bio-based value chains for valorisation of sustainable natural fibre feedstock	20
IA	IA-01	Bio-based materials and products for biodegradable in soil applications	15
	IA-02	Sustainable microalgae as feedstock for innovative, added-value applications	15
	IA-03	Enlarging the portfolio of commercially produced “Safe and Sustainable by design” (SSbD) solvents	15
	IA-04	Circular and SSbD bio-based construction & building materials with functional properties	15
	IA-05	Selective and sustainable (co)-production of lignin-derived aromatics	15
	IA-06	Innovative bio-based adhesives and binders for circular products meeting market requirements	15
	IA-07	Innovative conversion of biogenic gaseous carbon into bio-based chemicals, ingredients, materials	15
RIA	R-01	Valorisation of polluted/contaminated wood from industrial and post-consumer waste streams	7
	R-02	Biotech routes to obtain bio-based chemicals/materials replacing animal-derived ones	7
	R-03	Sustainable, bio-based alternatives for crop protection	10
	R-04	SSbD bio-based coating materials for applications under demanding and/or extreme conditions	7
	R-05	Innovative bio-based food/feed ingredients	7
CSA	S-01	New forms of cooperation in agriculture and the forest-based sector	4
	S-02	Mobilise inclusive participation in bio-based systems and supporting the CBE JU widening strategy and its action plan	3
	S-03	Supporting the CBE JU Deployment Group on Primary Producers	3

Total 213

# Call topic structure

## HORIZON-JU-CBE-2024-XX-NN Topic title

<b>Type of action</b>	Research and Innovation Action
<b>Indicative budget</b>	The total indicative budget for the topic is EUR 10 million
<b>Expected EU contribution per project</b>	It is estimated that a contribution of EUR 5 million would allow these outcomes to be addressed appropriately. Nonetheless, this does not preclude submission and selection of a proposal requesting different amounts
<b>TRL</b>	TRL 4-5 at the end of the project
<b>Link to CBE JU Specific Objectives</b>	1.1: Increase the intensity of cross-disciplinary research and innovation activities
<b>Link to CBE JU SRIA Strategic Priorities</b>	1.1.2: Develop innovative production systems in the bio-based industry 1.1.3: Develop innovative bio-based products
<b>CBE JU KPIs</b>	4.5 Number of products with improved life cycle environmental performance 5.1 Number of innovative products that are biodegradable, compostable, recyclable, reused or upcycled (circular-by-design) 5.2 Number of projects developing circular production practices (incl. industrial & industrial urban symbiosis) 6 Increase innovative bio-based outputs and products

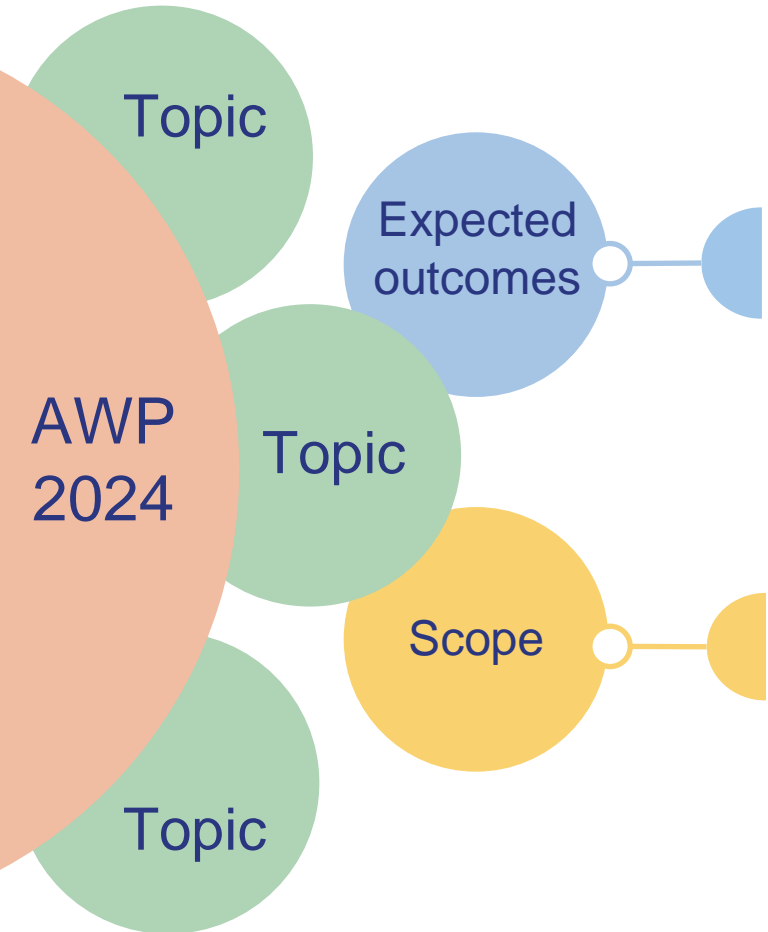
Topic

Topic

Topic

AWP  
2024

# Call topic structure



## *The 'change' to be achieved*

- Provides a broad description of what is the **impact** to be achieved by the project
- The **dissemination and exploitation** of future research results are vital for the impact`

## *The 'problem'*

- Identifies the aspects of the **challenge** that needs to be tackled
- Specifies a **perimeter** to the problem described
- Does not specify the expected solutions to the problem, nor the approach to be taken

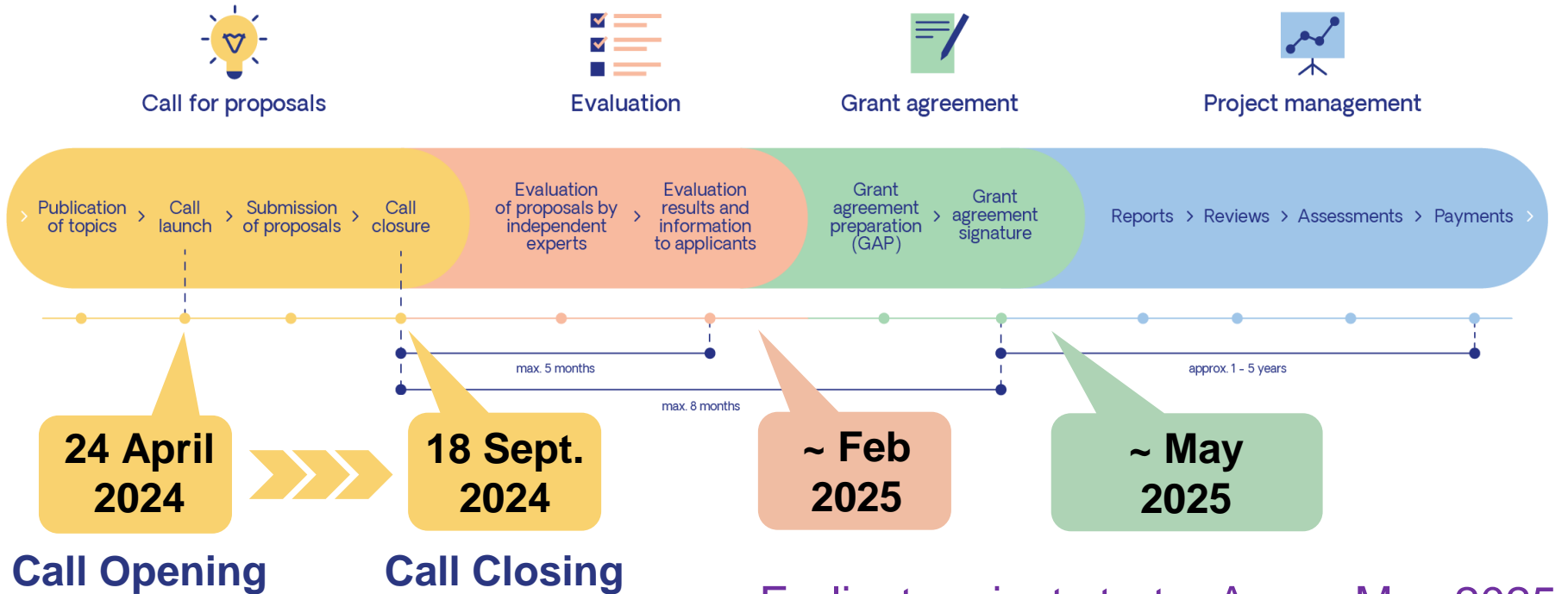
# Table of contents

- CBE JU - introduction
- **CBE JU Call 2024**
  - Call 2024 topic overview & structure
  - *Scope & overview of the call 2024 topics (Samuele)*
- **Proposal submission, evaluation & networking**
  - Timing
  - CBE specifics & terminology (incl. IKOP & IKAA)
  - Networking opportunities
- **How to prepare an excellent proposal**
  - Legal & financial aspects
  - Lessons learnt from past calls
- *BIC role in CBE JU, networking & matchmaking (Samuele)*
- Q&A

# Table of contents

- CBE JU - introduction
- CBE JU Call 2024
  - Call 2024 topic overview & structure
  - *Scope & overview of the call 2024 topics (Samuele)*
- **Proposal submission, evaluation & networking**
  - Timing
  - CBE specifics & terminology (incl. IKOP & IKAA)
  - Networking opportunities
- **How to prepare an excellent proposal**
  - Legal & financial aspects
  - Lessons learnt from past calls
- *BIC role in CBE JU, networking & matchmaking (Samuele)*
- Q&A

# Proposal preparation



Earliest project start = Apr or May 2025

# Similarities and **differences** with Horizon Europe



## Funding rate

- RIA: 100%
- IA: **60%** (100% non-profit)
- CSA: 100%



## Award criteria

- RIA, IA & CSA: Excellence, Impact, Implementation
- IA: + Impact **Ability to ensure 15% (IA) or 20% (IAFlag) of in-kind contribution to operational activities (IKOP)**  
= minimum IKOP percentage



## Page limit

- RIA: **50 p.**
- IA: **70 p.**
- CSA: 30 p.



## Scoring thresholds

- Excellence: 3/5
- Impact: **4/5**
- Implementation: 3/5
- Total: **11/15**



## Score weighting factor

- IA: Impact x 1,5



# In-kind contribution to operational activities (IKOP)

**IKOP** = Total eligible costs – Requested EU contribution (of private members)

In CBE JU, the only private member is the **Bio-based Industries Consortium (BIC)**.

→ **Minimum percentage of IKOP** must be reflected in the budget of partners that are BIC members.

Example 1: IA Flagship Criterion: $\geq 20\%$ IKOP	BIC member	Industry / Academia	Total eligible costs	Funding rate	Requested EU contribution	IKOP
Coordinator ( <b>BIC member</b> )	Y	industry	€ 7,000,000	60%	€ 4,200,000	€ 2,800,000
Beneficiary 1	N	academia	€ 590,000	100%	€ 590,000	
Beneficiary 2 ( <b>BIC member</b> )	Y	industry	€ 5,000,000	60%	€ 3,000,000	€ 2,000,000
Beneficiary 3	N	industry	€ 3,000,000	60%	€ 1,800,000	
Beneficiary 4	N	academia	€ 800,000	100%	€ 800,000	
<b>TOTAL</b>			<b>€ 16,390,000</b>		€ 10,390,000	<b>€ 4,800,000</b>

$$\text{Percentage IKOP} = \frac{\text{€ 4,800,000}}{\text{€ 16,390,000}} = 29,3\% > 20\% \quad \text{👍}$$

BIC has set up an open and fast procedure to become a BIC member: <https://biconsortium.eu/membership>

# In-kind contribution to operational activities (IKOP)

**IKOP = Total eligible costs – Requested EU contribution (of private members)**

In CBE JU, the only private member is the **Bio-based Industries Consortium (BIC)**.

→ **Minimum percentage of IKOP** must be reflected in the budget of partners that are BIC members.

Example 2: IA Criterion: $\geq 15\%$ IKOP	BIC member	Industry / Academia	Total eligible costs	Funding rate	Requested EU contribution	IKOP
Coordinator ( <b>BIC member</b> )	Y	industry	€ 3,200,000	60%	€ 1,920,000	€ 1,280,000
Beneficiary 1	N	academia	€ 590,000	100%	€ 590,000	
Beneficiary 2	N	industry	€ 1,500,000	60%	€ 900,000	
Beneficiary 3	N	industry	€ 3,000,000	60%	€ 1,800,000	
Beneficiary 4	N	academia	€ 800,000	100%	€ 800,000	
<b>TOTAL</b>			<b>€ 9,090,000</b>		€ 6,010,000	<b>€ 1,280,000</b>

$$\text{Percentage IKOP} = \frac{\mathbf{€1,280,000}}{\mathbf{€9,090,000}} = 14,1\% < 15\% \quad \text{👎}$$

BIC has set up an open and fast procedure to become a BIC member: <https://biconsortium.eu/membership>

# IKOP vs BIC membership

- **IKOP?**

- Total eligible costs minus total requested funding (of BIC members)
- Only applicable to Innovation Actions (IAs) incl. Flagships
- CBE JU evaluation subcriterion (15% or 20% threshold)

- **BIC membership**

- CBE JU will check BIC membership during evaluation...
- ...via an Annex to the proposal: 1 pdf file with all 'BIC membership certificates' or BIC members involved in the consortium
- BIC membership certificates to be requested to BIC via <https://bic.elisca.app/membership/certificate/registration>
- When building your consortium, you might encounter organisations interested in becoming a BIC member (and who could 'boost' your IKOP)
- **'Project membership'**: temporary membership option, (only) relevant for CBE JU Calls: the organisation will become a BIC member if their proposal is successful

# IKAA vs BIC membership

- **IKAA?**

- ‘In-kind contributions to Additional Activities’
- Investments not funded by CBE JU (so not in proposal budget), that will i) contribute to CBE JU’s objectives and ii) increase the uptake of project results
- Examples: investments in new facilities, plants, infrastructure,...; standardization activities; (extra) communication, dissemination & exploitation activities;...
- Only applicable to Innovation Actions (IAs) incl. Flagships
- **NOT** a CBE JU evaluation subcriterion

- **Link with Call 2024 proposals**

- Draft IKAA plan can be submitted as an Annex to the proposal
- Although not taken into account during the evaluation...
- ...an IKAA plan will be requested to successful proposals invited to the next stage (Grant Agreement Preparation - GAP)
- BIC membership to be checked (only) during GAP

# Horizon Europe + CBE requirements

## Horizon Europe (HE) rules

- Eligibility
- Admissibility
- General annexes

## HE evaluation criteria

- Excellence
- Impact
- Implementation

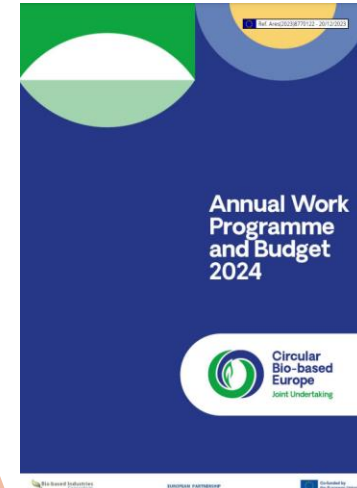
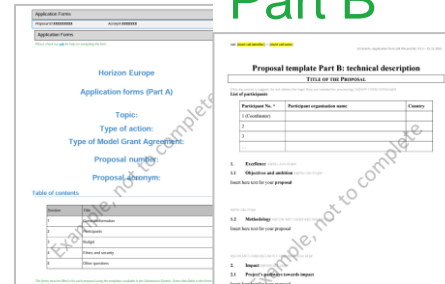
## CBE Annual Work Programme 2024

- Topics
- **Specific requirements**
- Budget



## Part A Part B

## Proposal structure



Specific CBE JU requirement	Type of action	Where to include it in Part B
<b>Feedstock sourcing (eligibility condition)</b>	RIA and IA, incl. FLAG	Part B – (Y/N) question
<b>Feedstock sustainability requirements</b>	RIA and IA, incl. FLAG	Part B – (Y/N) question
<b>Description of feedstock</b>	RIA and IA, incl. FLAG	Part B – 1.2 Methodology
<b>Environmental performance - Ex-ante assessment</b> <ul style="list-style-type: none"> <li>• identification of environmental issues</li> <li>• estimation of environmental sustainability performance,</li> <li>• estimation of carbon removal potential</li> </ul>	RIA and IA, incl. FLAG	Part B – 1.2 Methodology
<b>Environmental sustainability and circularity - Ex-post assessment</b> <ul style="list-style-type: none"> <li>• Dedicated task for RIA</li> <li>• Dedicated task or WP (LCA) for IA non-FLAG</li> <li>• Dedicated task or WP (LCSA) for FLAG</li> </ul>	RIA IA- non FLAG FLAG	Part B – 3.1 Workplan and resources

# CBE JU Call 2024 specific requirements (2/2)

Specific CBE JU requirement	Type of action	Where to include it in Part B
<b>Multi-actor approach (MAA)</b>	IA, incl. FLAG RIA and CSA, when specified	Part B – 1.2 Methodology
<b>Economic aspects:</b> <ul style="list-style-type: none"> <li>Economic viability</li> <li>Business case and business model</li> <li>Business plan</li> </ul>	RIA IA, incl. FLAG FLAG	Part B – 2.2 Measures to maximise impact – D& E&C FLAG: Annex (Business plan)
<b>Digital technologies</b>	RIA and IA, incl. FLAG	Part B – 1.2 Methodology
<b>Cross-disciplinary aspects and Social Sciences and Humanities (SSH)</b>	All types of actions	Part B – 1.2 Methodology
<b>Recommendations to stakeholders</b>	IA, incl. FLAG	Part B – 3.1 Workplan and resources

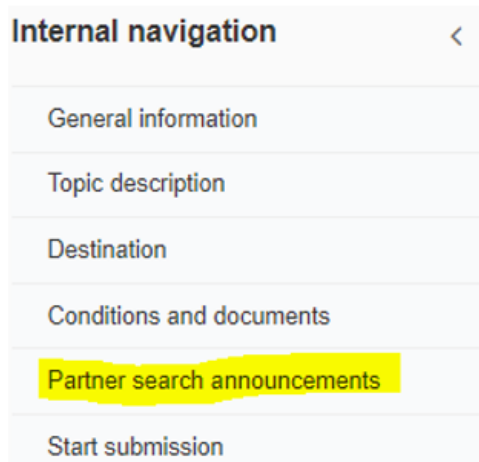
## Networking opportunities

- Funding & tender Opportunities Portal
- CBE JU networking platform
- CBE JU info day 23 April 2024 (Brussels & online)
- *BIC networking (Samuele)*



## Funding & Tender opportunities Portal

- ‘Partner search’ facility for each topic encoded in the Portal
- Purpose: (free) publication of publicly visible partner search requests
- Accessible via <https://ec.europa.eu/info/funding-tenders/opportunities/portal/screen/opportunities/topic-search>



View / Edit

## CBE JU networking platform

- Annually updated & free partner search facility offered by CBE JU, more tailored to CBE needs than the Portal's partner search facility
- Open since mid-February 2024, will remain open until (at least) call closure on 18 Sept 2024
- Different services: 'Find & be found'
  - Partner search & expressing interest in on or more topics;
  - Presentation of project ideas
  - Showcasing / offering your expertise
  - Direct messaging & scheduling B2B meetings
  - Registration for the CBE JU info days
- Accessible via <https://www.cbe.europa.eu/networking-platform>

# CBE JU Info Day 2024

23 April, Brussels

**Register now!**

#CBEInfoDay



Find more:  
[cbe.europa.eu/infoday24](https://cbe.europa.eu/infoday24)

# Table of contents

- **CBE JU - introduction**
- **CBE JU Call 2024**
  - Call 2024 topic overview & structure
  - *Scope & overview of the call 2024 topics (Samuele)*
- **Proposal submission, evaluation & networking**
  - Timing
  - CBE specifics & terminology (incl. IKOP & IKAA)
  - Networking opportunities
- **How to prepare an excellent proposal**
  - Legal & financial aspects
  - Lessons learnt from past calls
- *BIC role in CBE JU, networking & matchmaking (Samuele)*
- **Q&A**

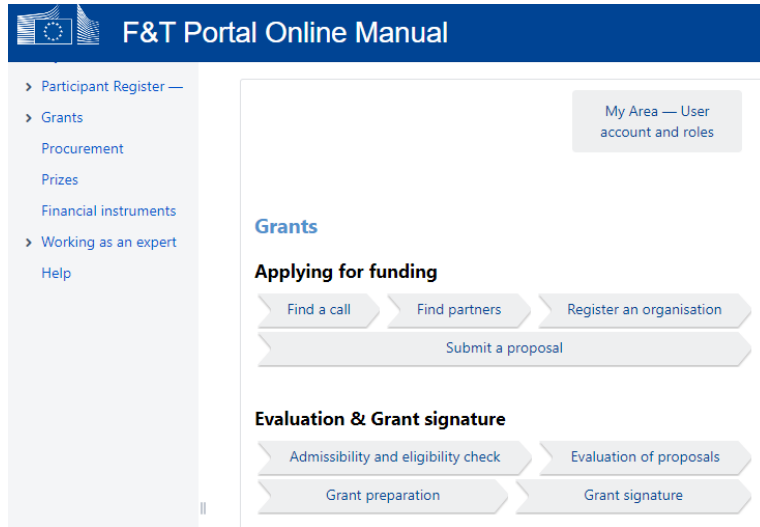
# Table of contents

- **CBE JU - introduction**
- **CBE JU Call 2024**
  - Call 2024 topic overview & structure
  - *Scope & overview of the call 2024 topics (Samuele)*
- **Proposal submission, evaluation & networking**
  - Timing
  - CBE specifics & terminology (incl. IKOP & IKAA)
  - Networking opportunities
- **How to prepare an excellent proposal**
  - Legal & financial aspects
  - Lessons learnt from past calls
- *BIC role in CBE JU, networking & matchmaking (Samuele)*
- **Q&A**

# CBE JU cost eligibility

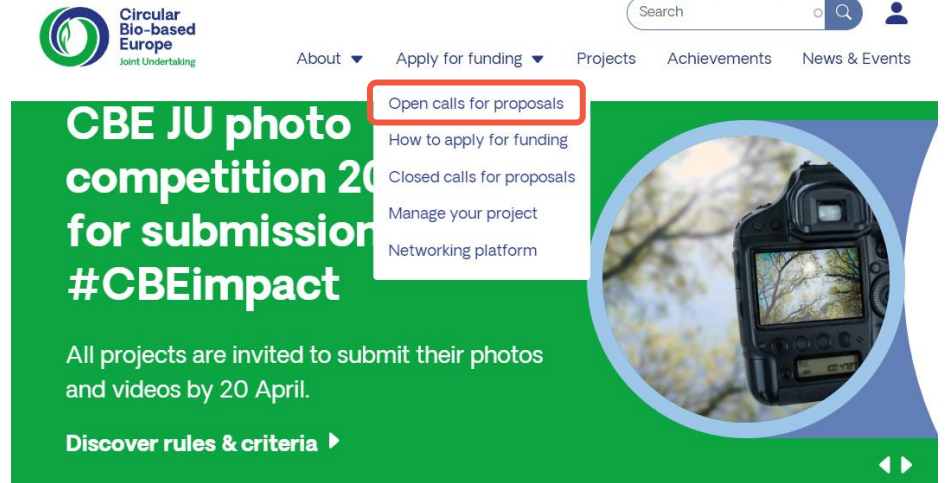
- **CBE JU fully follows the Horizon Europe cost eligibility rules**
- **Cost categories**
  - A. Personnel costs (employees, natural person under direct contract, seconded persons, SME owners not receiving a salary,...)  
*New as of 1 May 2024:* option to certify [personnel unit costs](#)
  - B. Subcontracting costs
  - C. Purchase costs (travel & subsistence; Equipment (typically depreciated); other goods, works & services)
  - D. Other cost categories
  - E. Indirect costs (= 25% of categories A, C, and sometimes D; but not B. Subcontracting)
- **Most relevant info sources**
  - [Annotated model grant agreement](#), art. 6 (“eligible and ineligible costs and contributions”): includes definitions *and* examples
  - CBE JU’s FAQ for applicants Call 2024 (also on CBE JU website)

# Two main sources of legal & financial information



The screenshot shows the 'F&T Portal Online Manual' interface. On the left is a navigation menu with categories like 'Participant Register', 'Grants', 'Procurement', 'Prizes', 'Financial instruments', 'Working as an expert', and 'Help'. The main content area is titled 'Grants' and includes a 'My Area — User account and roles' button. Below this, there are two main sections: 'Applying for funding' and 'Evaluation & Grant signature'. The 'Applying for funding' section contains a flowchart with steps: 'Find a call', 'Find partners', 'Register an organisation', and 'Submit a proposal'. The 'Evaluation & Grant signature' section contains a flowchart with steps: 'Admissibility and eligibility check', 'Evaluation of proposals', 'Grant preparation', and 'Grant signature'.

<https://webgate.ec.europa.eu/funding-tenders-opportunities/display/OM/Online+Manual>



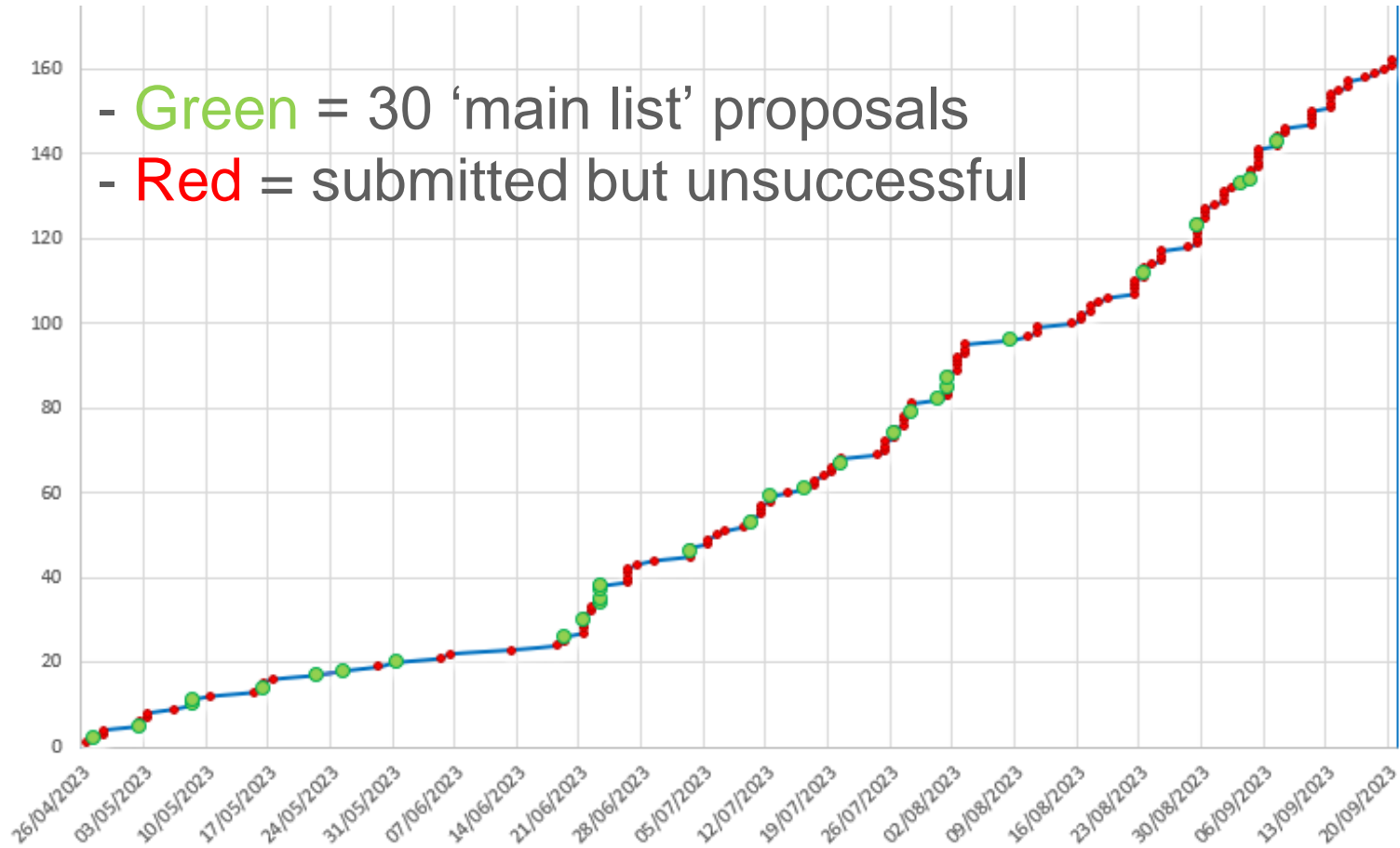
The screenshot shows the CBE JU website. The header includes the logo, navigation links (About, Apply for funding, Projects, Achievements, News & Events), a search bar, and a user profile icon. A dropdown menu is open under 'Apply for funding', listing 'Open calls for proposals', 'How to apply for funding', 'Closed calls for proposals', 'Manage your project', and 'Networking platform'. The main banner features a green background with the text 'CBE JU photo competition 2023 for submission #CBEImpact' and a circular image of a camera. Below the banner, it says 'All projects are invited to submit their photos and videos by 20 April.' and 'Discover rules & criteria'.

<https://www.cbe.europa.eu/open-calls-proposals>  
(Incl. FAQ for applicants, link to networking platform, NCP\_WIDERA.net pre-check proposal service...)

- **Call 2023:** 344 proposals *created* in Portal
  - 105 remained in draft ('test' proposals...or missed submission deadline?)
  - 77 deleted
  - 162 submitted
- **162 submitted proposals**
  - 7 proposals did not pass eligibility and admissibility, or were withdrawn
  - 51 proposals did not pass one or more of the evaluation threshold(s)
  - 74 proposals were above the evaluation thresholds, but below the funding available (= including proposals on the 'reserve list')
  - 30 proposals were invited for Grant Agreement Preparation ('main list')
- *Would there be correlation (or even causation) between the creation time of a proposal and its success rate?*
- *Does an early proposal creation indicate a higher success rate?*



# Call 2023 submission statistics (2/3)



- Data analysis

	Created between...	Median creation date	Created in September
30 x Main list	27/04 - 07/09	03/07/2023	3 (10%)
74 x above threshold(s)	28/04 - 19/09	26/07/2023	14 (19%)
51 x below threshold(s)	26/04 – 18/09	19/08/2023	14 (27%)
7 x ineligible/withdrawn	06/05 - 20/09	29/08/2023	3 (43%)

- Conclusions

- Positive **correlation** between early proposal creation and success rate
- Possible reasons for **causality**: more time to build a solid consortium and cover all requirements, especially for IAs + FLAGs
- Early creation = earlier awareness about elements blocking submission (IT tool provides warnings) = more time to solve them => **starting to work in the Portal asap adds value!**

# Horizon Europe + CBE requirements

## Horizon Europe (HE) rules

- Eligibility
- Admissibility
- General annexes

## HE evaluation criteria

- Excellence
- Impact
- Implementation

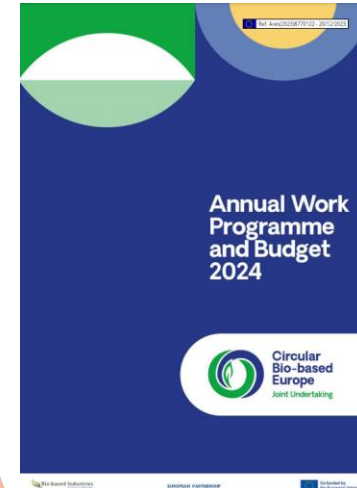
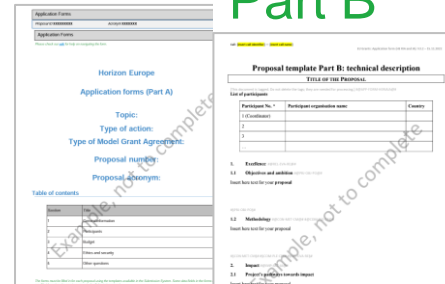
## CBE Annual Work Programme 2024

- Topics
- Specific requirements
- Budget



## Part A Part B

## Proposal structure



# Horizon Europe scoring principles

**0** The proposal **fails to address the criterion** or cannot be assessed due to missing or incomplete information.

**1** **Poor.** The criterion is inadequately addressed, or there are **serious inherent weaknesses**.

**2** **Fair.** The proposal broadly addresses the criterion, but there are **significant weaknesses**.

**3** **Good.** The proposal addresses the criterion well, but a number of **shortcomings** are present.

**4** **Very Good.** The proposal addresses the criterion very well, but a small number of **shortcomings** are present.

**5** **Excellent.** The proposal successfully addresses all relevant aspects of the criterion. Any **shortcomings** are **minor**.

**CBE JU  
evaluation  
thresholds: 3/5  
or 4/5 (impact)**

## Top 5+1 most common shortcomings ordered by frequency

1. **Impact** – expected outcomes (= bullet points in topic text)
  2. **Implementation** – work plan (incl. Tasks, deliverables,...)
  3. **Excellence** – ambition level, (going beyond) SOTA, TRLs
  4. **Implementation** – risk & mitigation measures
  5. **Excellence** – scope (bullet points in topic text)
  6. (For RIAs: **Impact** – economic viability check)
- The 3 'biggest' evaluation elements*

## Top 5 most common weaknesses ordered by frequency

1. Excellence – methodology
2. Excellence – ambition level, (going beyond) SOTA, TRLs
3. Excellence – scope (bullet points in topic text)
4. Impact – expected outcomes (= bullet points in topic text)
5. Implementation – work plan

*You can't hide  
a bad idea...*

Equally interesting: what **ISN'T** there...the IA IKOP evaluation subcriterion

# Aim for total “Topic eclipse”

Topic<sup>+</sup> Proposal

Topic Proposal

Proposal

Topic<sup>+</sup> = Topic text + HE requirements + CBE specific requirements

every single word in topic text counts!



every specific requirement element counts!

# A good and convincing CBE JU proposal



Ensure that the proposed work is within the **scope of the topic**



Demonstrate that the idea is **ambitious** and goes beyond the **state of the art**



Your **methodology** must take into account open science practices and interdisciplinarity (+ gender dimension, if applicable)



Show clearly how the proposed work could contribute to the **outcomes and impacts** described in the work programme (the pathway to impact)



Describe the planned measures to **maximise the impact** of the project ('plan for dissemination & exploitation including communication activities')



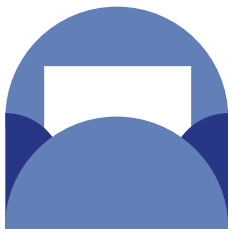
Demonstrate the quality of the **implementation**, including work plan, resources and participants



Read carefully the **AWP2024** and the **Strategic Research and Innovation Agenda (SRIA)**, for a good understanding of the context and long-term objectives of CBE JU !!!



## More information



**Subscribe to  
CBE JU newsletter**



[cbe.europa.eu](https://cbe.europa.eu)



**Become a BIC  
Member**



[biconsortium.eu](https://biconsortium.eu)



**Horizon Europe Funding  
and Tender portal**



[europa.eu/!jH76RF](https://europa.eu/!jH76RF)

# Table of contents

- **CBE JU - introduction**
- **CBE JU Call 2024**
  - Call 2024 topic overview & structure
  - *Scope & overview of the call 2024 topics (Samuele)*
- **Proposal submission, evaluation & networking**
  - Timing
  - CBE specifics & terminology (incl. IKOP & IKAA)
  - Networking opportunities
- **How to prepare an excellent proposal**
  - Legal & financial aspects
  - Lessons learnt from past calls
- *BIC role in CBE JU, networking & matchmaking (Samuele)*
- **Q&A**

# Table of contents

- **CBE JU - introduction**
- **CBE JU Call 2024**
  - Call 2024 topic overview & structure
  - *Scope & overview of the call 2024 topics (Samuele)*
- **Proposal submission, evaluation & networking**
  - Timing
  - CBE specifics & terminology (incl. IKOP & IKAA)
  - Networking opportunities
- **How to prepare an excellent proposal**
  - Legal & financial aspects
  - Lessons learnt from past calls
- **BIC role in CBE JU, networking & matchmaking (Samuele)**
- **Q&A**



**Circular  
Bio-based  
Europe**  
Joint Undertaking

Contact us

[info@cbe.europa.eu](mailto:info@cbe.europa.eu)  
[www.cbe.europa.eu](http://www.cbe.europa.eu)

Follow us



Subscribe



 Bio-based Industries  
Consortium

 Co-funded by  
the European Union