

EU Just Transition Fund Peat Research Platform

24/05/2024

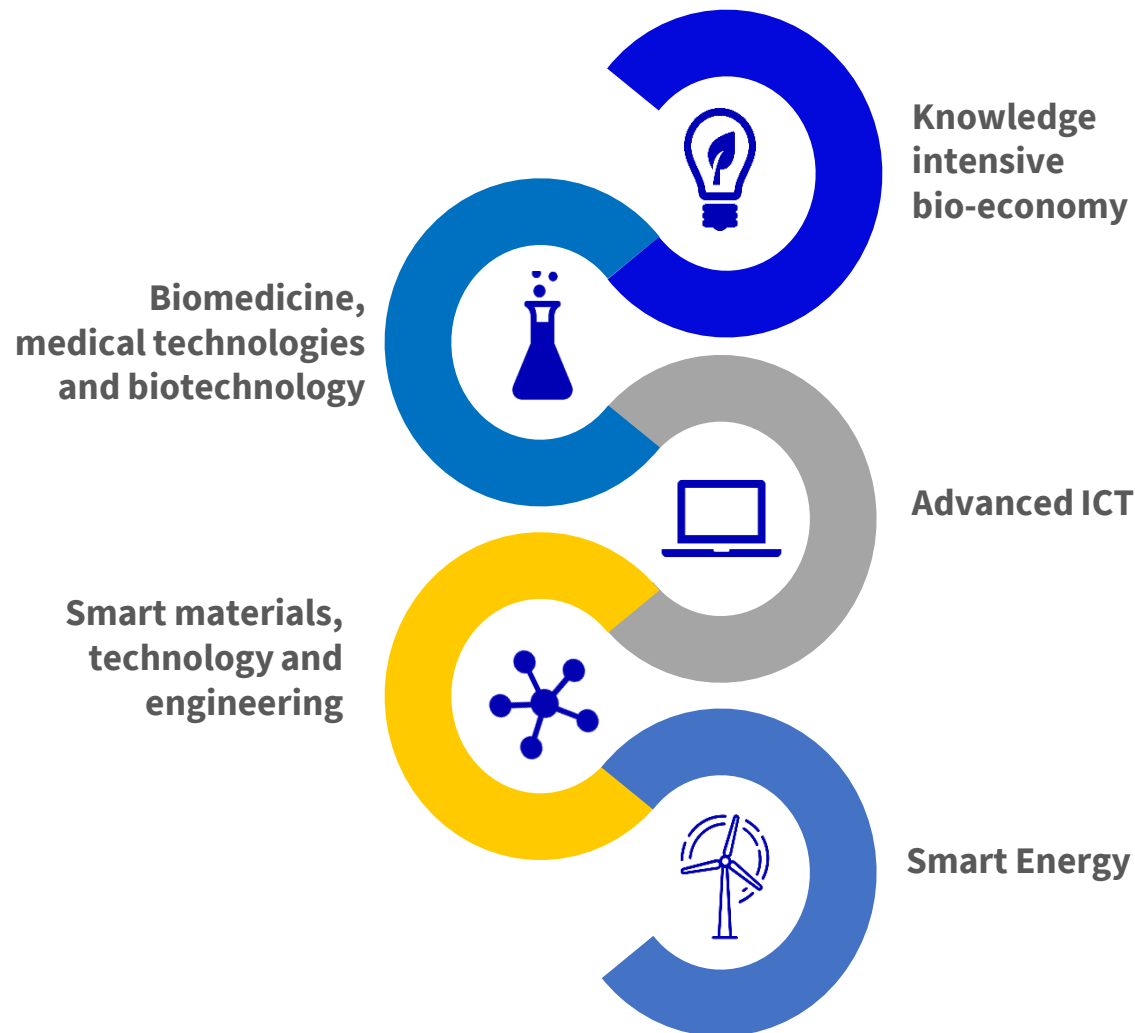
Edvards Francis Kuks

Head of RIS3 Unit
Ministry of Education and Science
of the Republic of Latvia



Key Facts About Research in Latvia

SMART SPECIALISATION AREAS



LARGEST RESEARCH INSTITUTIONS

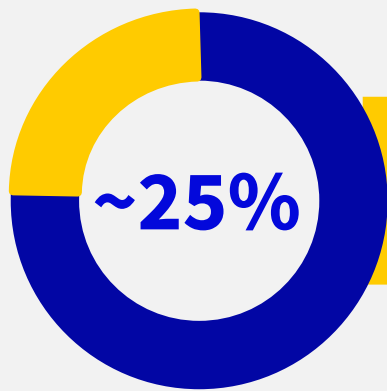


Finance



291 M EUR

In 2022, 0.75% of GDP were invested in R&D



of companies are
active in innovations

Research environment



64 research
institutions

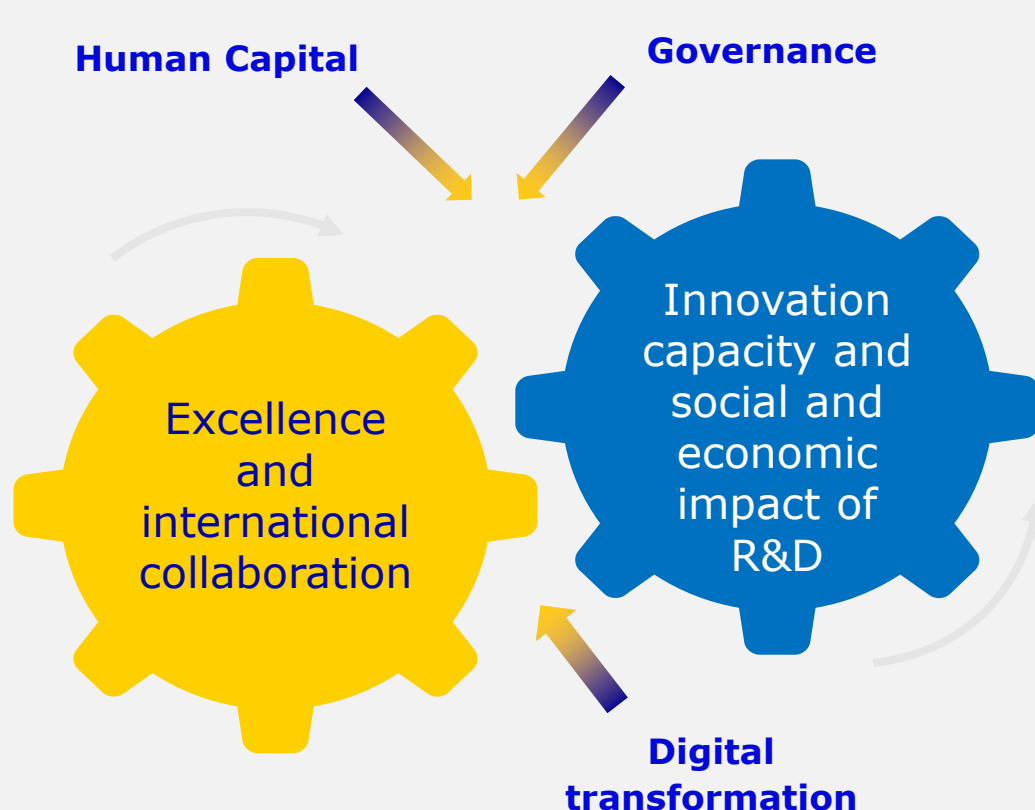
22 state funded research institutions



14 200 research
personnel

(7050 in FTE), ~20 % work
in the industry (2021)

Main Policy Priorities in R&D for 2021-2027



1

1.5% R&D % of GDP

Sufficient public support, emerging private R&D investments

2

At least 8000 research personnel (in FTE)

Sustainable growth of R&D human capital needed to foster economic transformations and excellent higher education

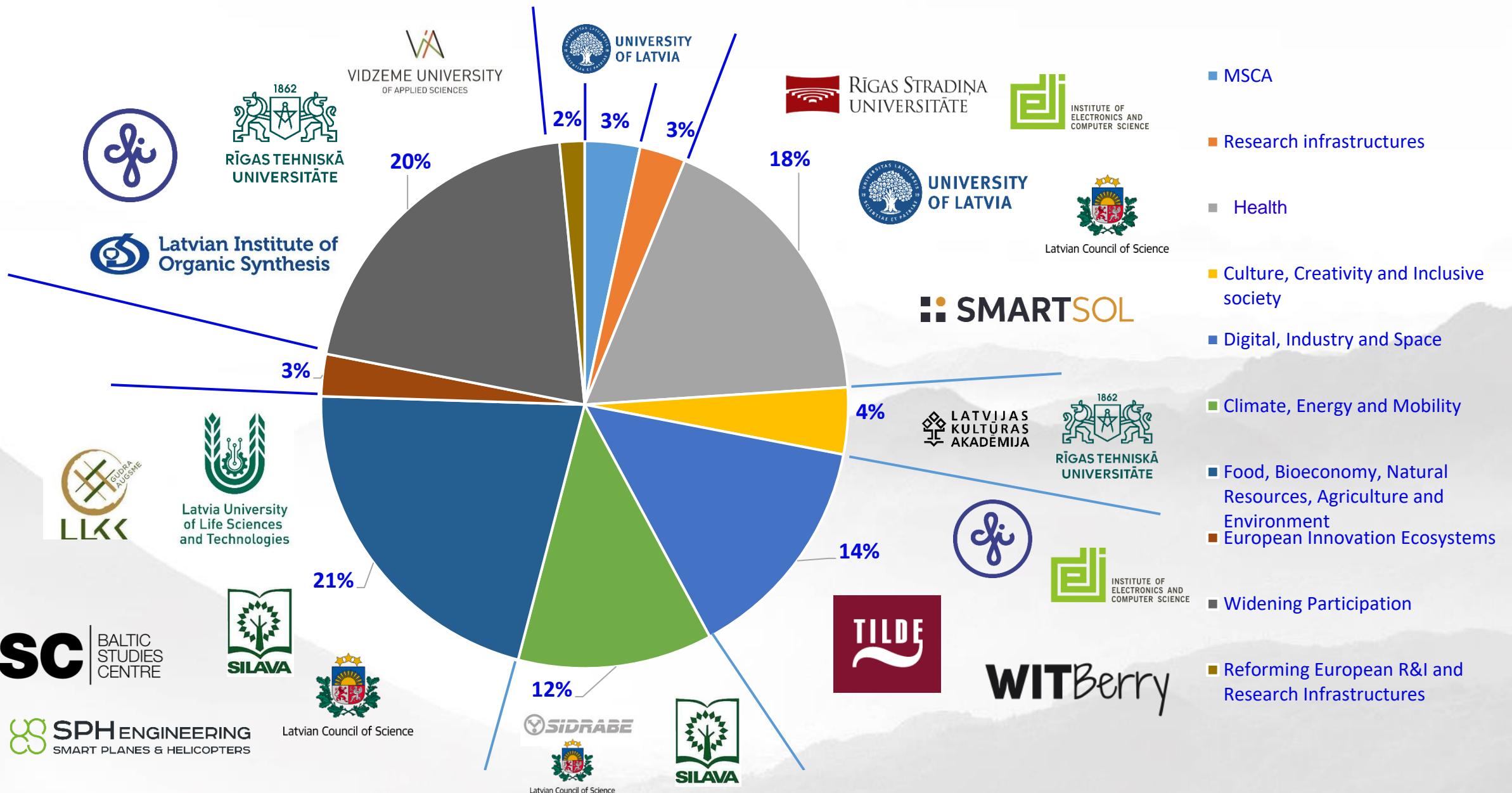
3

Diverse and competitive research system

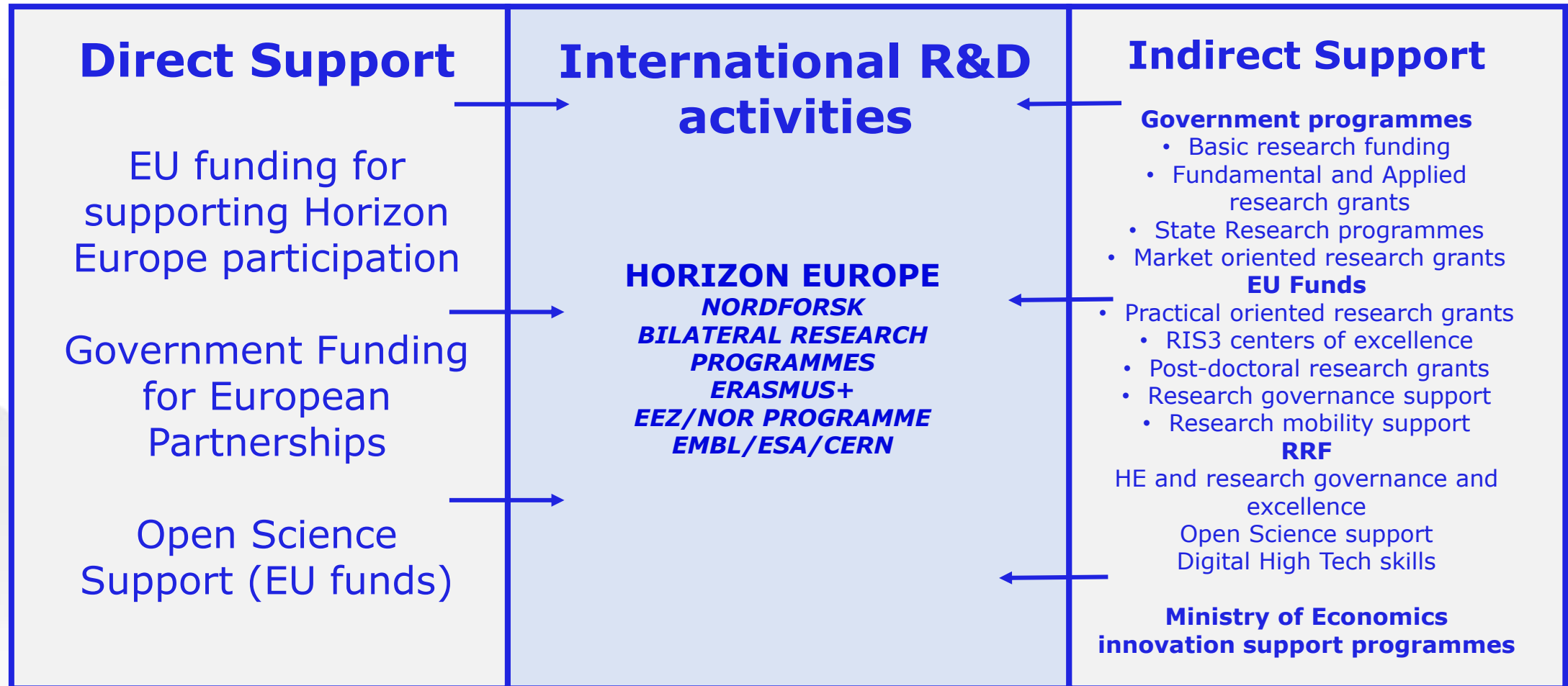
Success on the international stage (e.g. Horizon Europe), active participation in European partnerships

Supporting the **mobility of researchers** has a direct impact on increasing of international collaboration & scientific excellence

Horizon Europe – positive start for Latvian institutions



National R&D programmes and their links with international programmes



JTF Peat Research Platform

SUPPORTED ACTIVITIES:

- 1) Establishment of a research platform and centre of excellence for sustainable use of natural resources, contributing to the transition towards climate neutrality
- 2) Support for 5 thematic objectives supporting the sustainable use of natural resources

INDICATORS [until 31.12.2029]

Scientific publications (WoS, Scopus and ERIH+) – 50

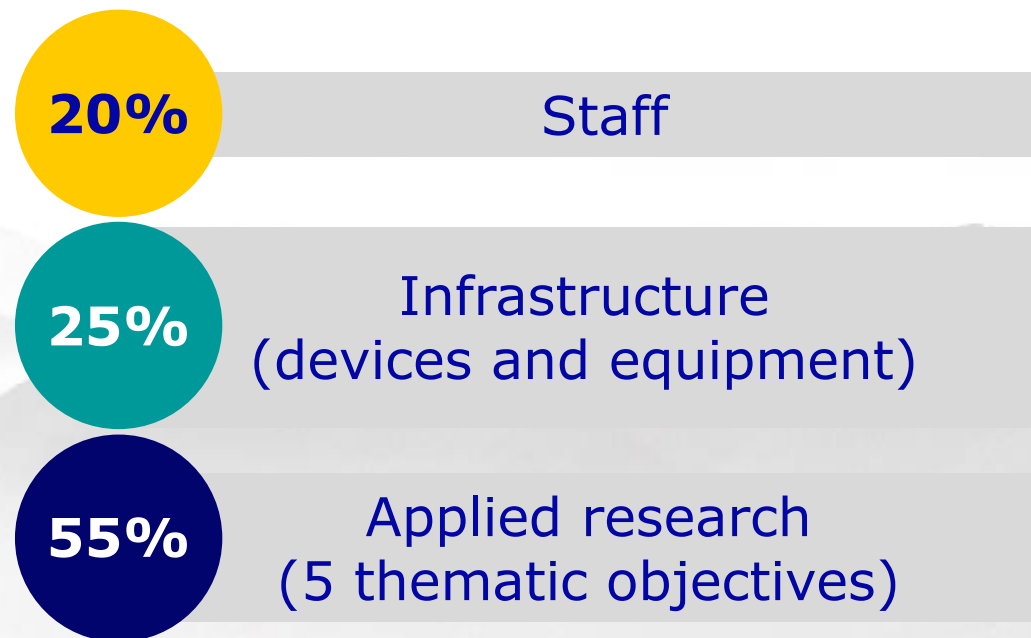
Companies collaborating with research institutions – 5

Further project proposal submissions – 3

Support directed towards activities within Vidzeme, Latgale, Kurzeme and Zemgale regions (outside the Riga metropolitan area)

FUNDING

5 981 103 EUR,
Incl. JTF 5 083 937 EUR
Provisional limits on planned costs:





**Project
proposal
must contain**

Activities and solutions targeted toward Vidzeme, Latgale, Kurzeme and Zemgale (outside Riga area)

All research universities in the consortia must disseminate results, results must be available to all research universities (incl. outside the consortia)

Results integrated at all levels of study, including encouraging post-doctoral research

Collaboration with at least 5 companies to define research needs, results publicly available to all



Open call for proposals

One project will be supported, with the following conditions:

Lead institution

A scientific institution that has received a score of **4** in the 2019 International Evaluation of Scientific Institutions

OR

A research university (*key players with broad resources*)

Ensuring high scientific quality

At least three consortia members, including

At least 2 research universities

AND

1 scientific institution, *which received a score of 4 in the 2019 International Evaluation of Scientific Institutions*

Ensures thematic and regional coverage

Thematic scope

Support for non-commercial research activities

Thematic objectives (5): developing research for the sustainable use of natural resources and climate neutrality in the peat sector:



Improving Latvia's GHG inventory and monitoring methods

Technologies and solutions for reducing GHG- and carbon-intensive peat extraction, and solutions for recultivation activities, including pilot projects

Studies on GHG emissions and CO₂ sequestration in the peat sector

Socio-economic assessment and development of future scenarios for the future use of reclaimed peat extraction sites

New technologies and products directed at reducing GHG and peat substrate alternatives

Upcoming opportunities: NordForsk Sustainable Forestry

Existing research project themes in national programmes: *forest ecosystems, forest management, forest ecology*

Topics of interest: *impact of climate change on forestry, resilience of forests against impact of climatic changes, sustainable forestry and supply of wood, forest ecology, forest phytopathology and mycology*

Support for participation in NordForsk calls available through Latvian Council of Science

Future NordForsk calls can be suggested if supported by 3 states (including 1 NordForsk member)

Thank you!

